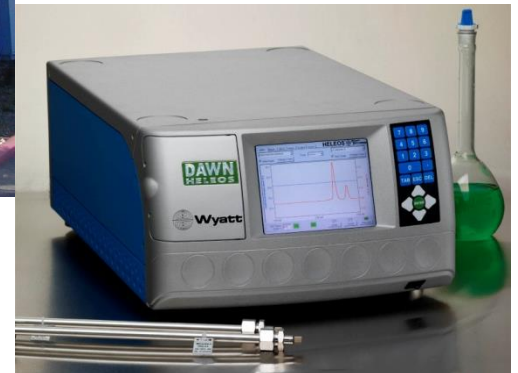
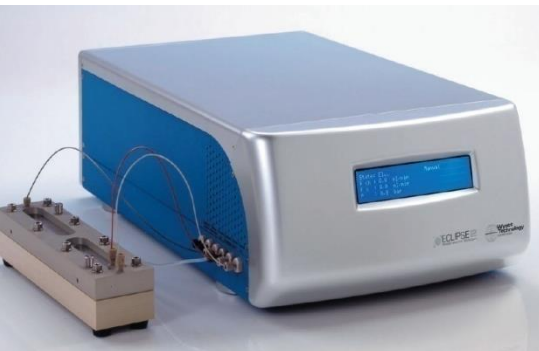
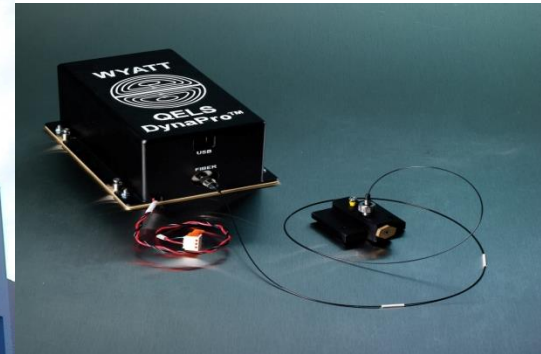
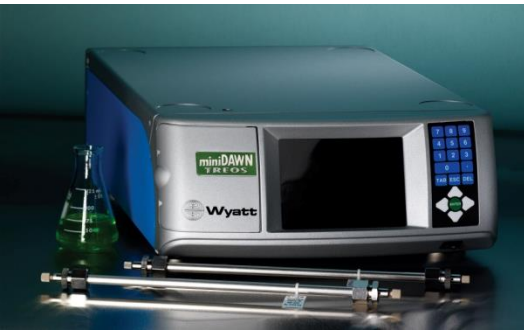
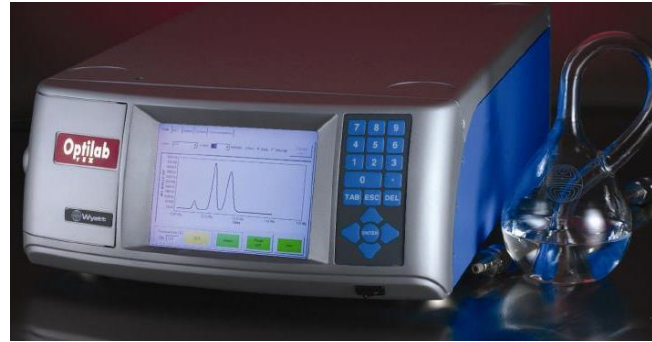
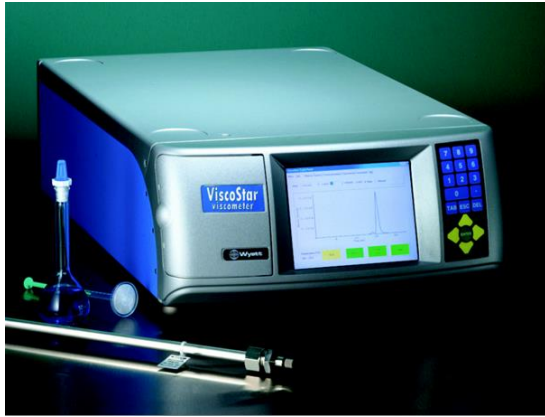


Instruments with ever expanding applications



WYATT
TECHNOLOGY

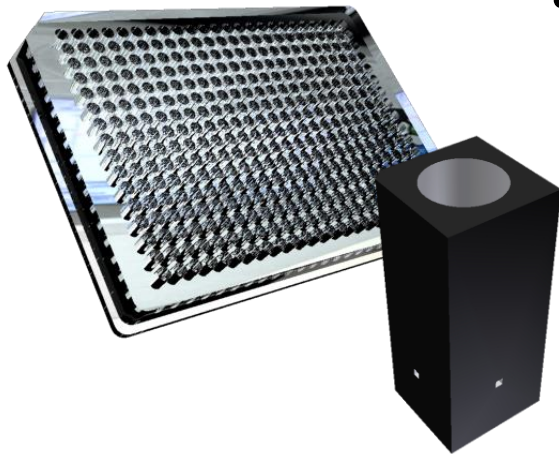
Two Types of Light Scattering

- ***Static Light Scattering***



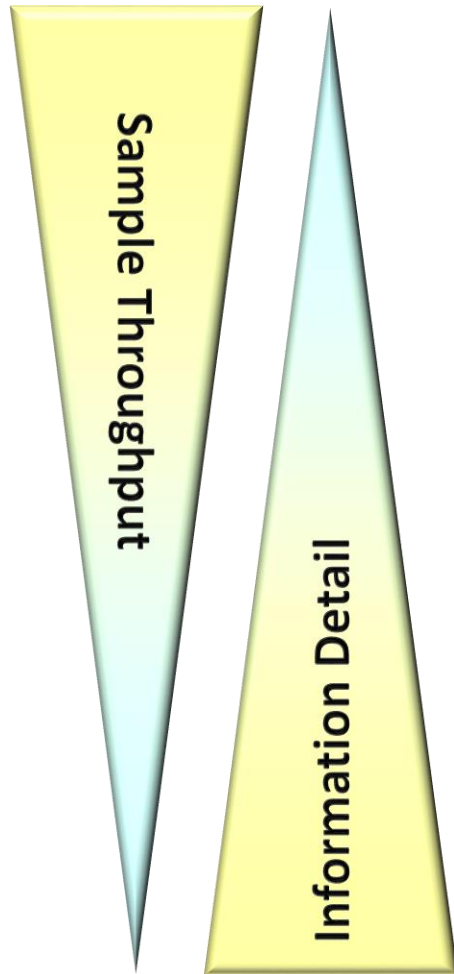
- a.k.a. Classical LS, Total Intensity LS, Multiangle LS
- Measures total intensity of scattered light
- Determines molecular weight, RMS radius (R_g) and second virial coefficient A_2 (B_{22}) based on first principle

- ***Dynamic Light Scattering***



- a.k.a. QELS, PCS
- Measures time dependence of LS intensity change
- Determines translational diffusion coefficient directly, from which the hydrodynamic radius (R_h) can be determined

Which Instrument?



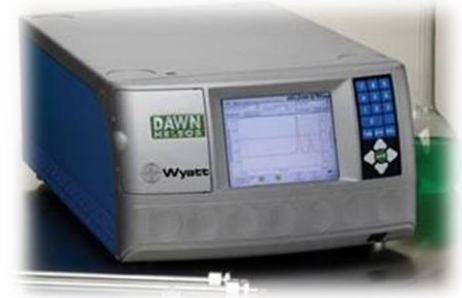
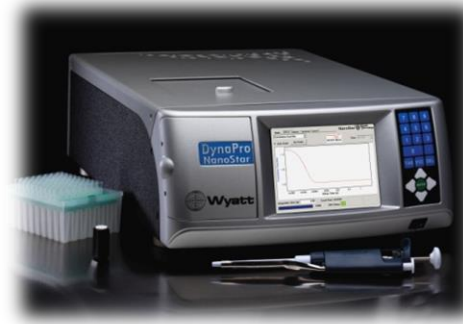
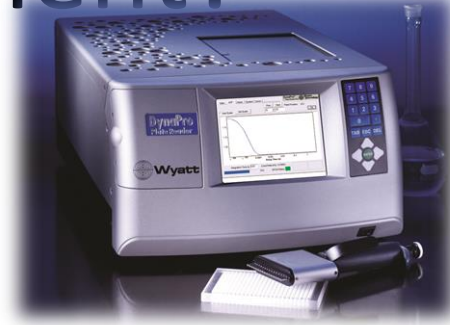
DynaPro
Plate Reader



DynaPro
NanoStar

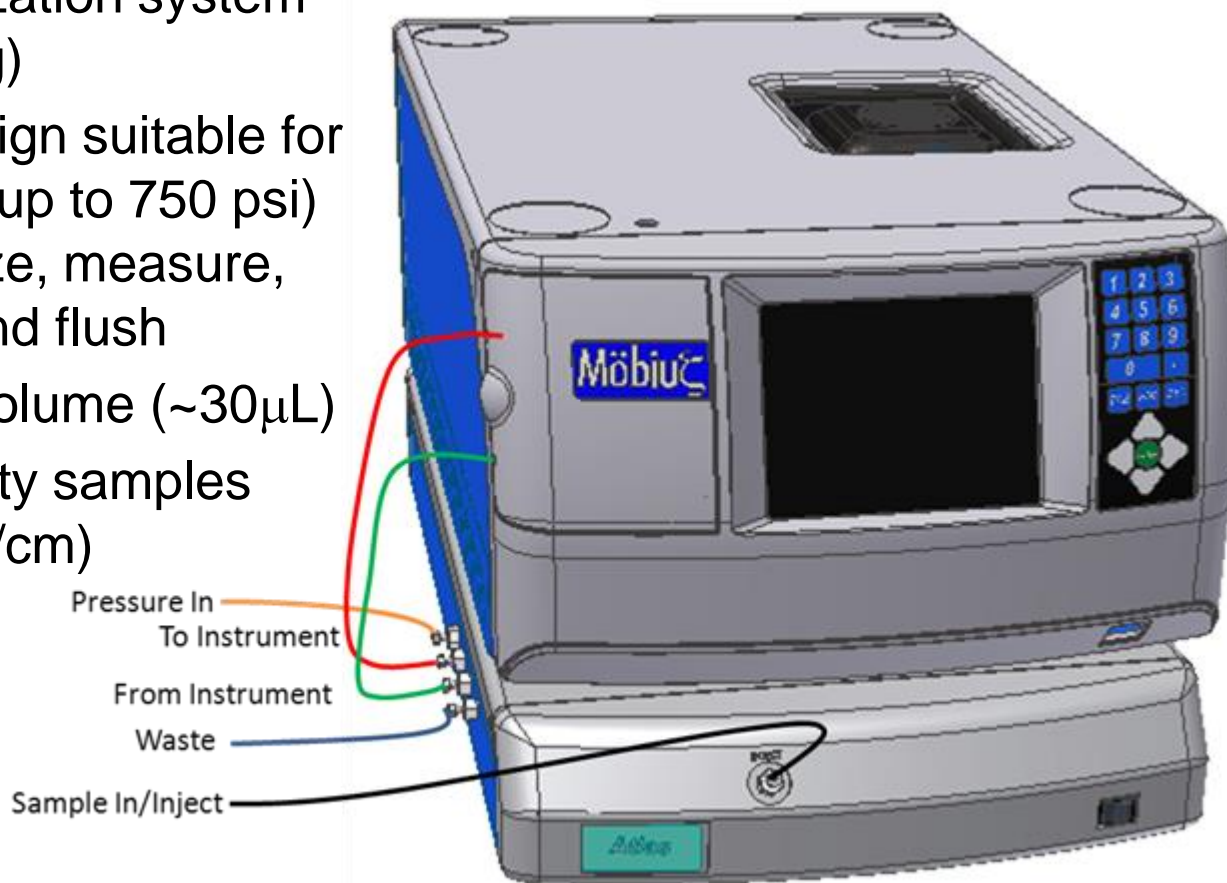


DLS + MALS
with Separation
Technique (SEC/FFF)



Möbius/Atlas for working with high-salt samples

- Atlas[®] pressurization system (patent-pending)
- Unique cell design suitable for pressurization (up to 750 psi)
- Inject, pressurize, measure, depressurize and flush
- Minimal extra volume (~30 μ L)
- High-conductivity samples (\rightarrow 60 mS/cm)



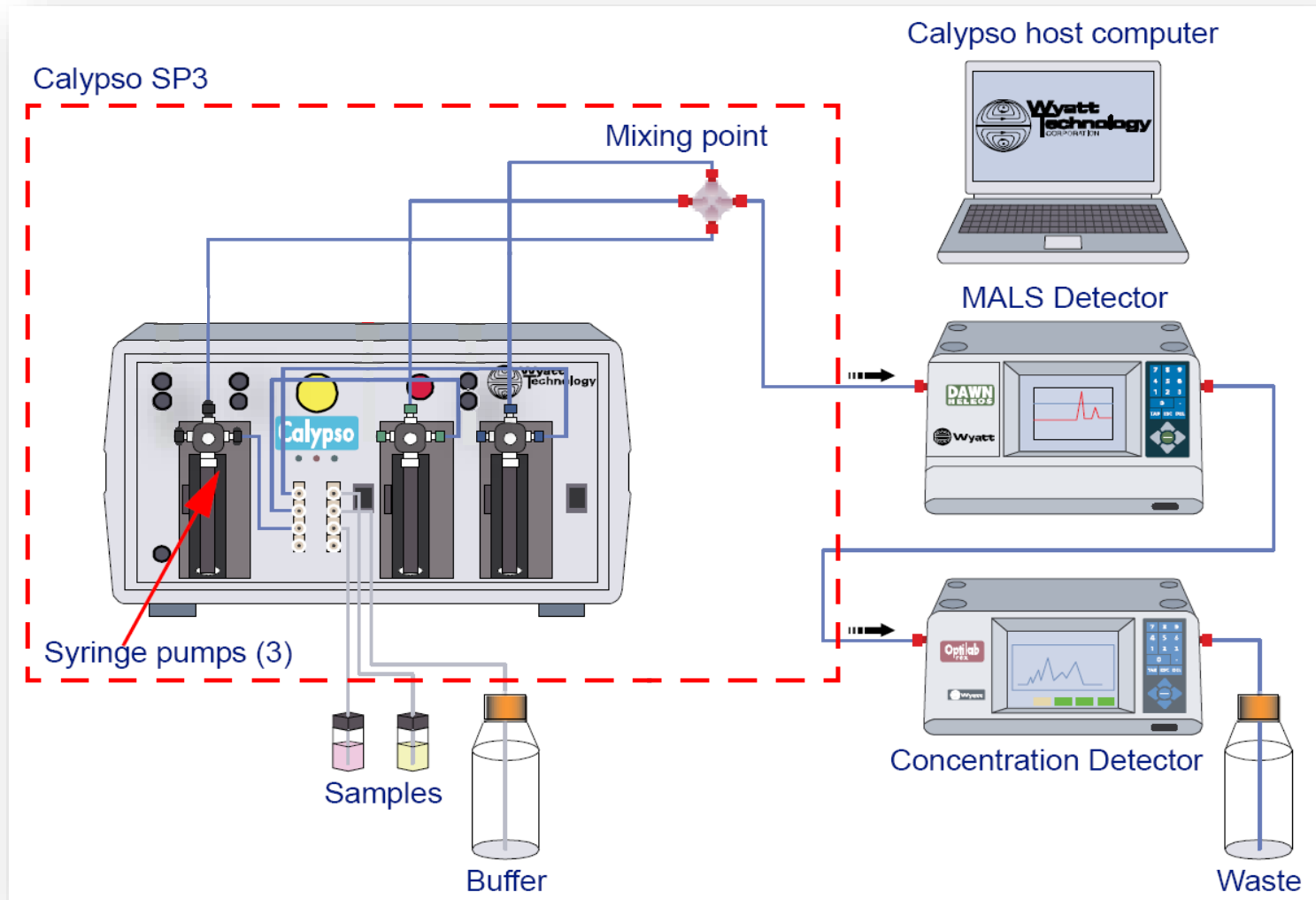
Mobius Atlas (automated loading)



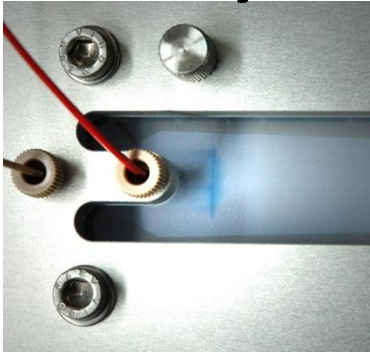
Measuring Macromolecular Interactions using Multi-Angle Light Scattering with a Calypso System



CG-MALS set-up: Calypso + DAWN + Concentration



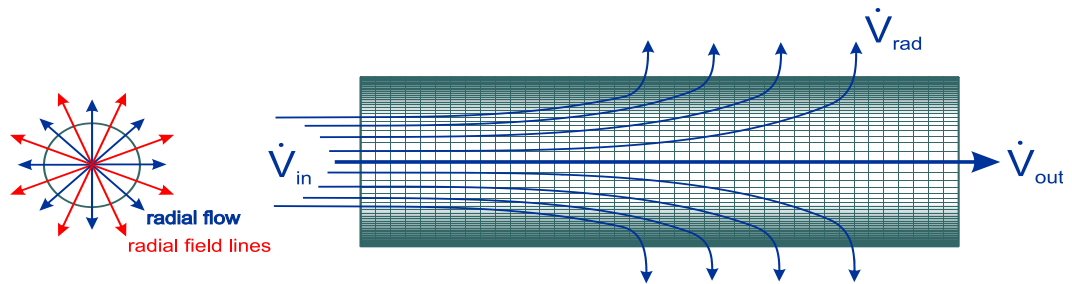
Asymmetrical Flow FFF (AF4)



Only one pump is needed (Agilent or Shimadzu)

The injection flow is generated by a split off the main flow for AF4; part of inlet flow for Dualtec.

Benefit: less hardware maintenance with only one pump for all flow





WYATT
TECHNOLOGY

**Come over and Talk – I
have a lot of pens to give
away!**